



## CD23 (ABT-CD23) mouse mAb

<b>Catalog No</b>	YP-Ab-15120
<b>Isotype</b>	IgG
<b>Reactivity</b>	Human
<b>Applications</b>	IHC;IF
<b>Gene Name</b>	FCER2 CD23A CLEC4J FCE2 IGEBF
<b>Protein Name</b>	Low affinity immunoglobulin epsilon Fc receptor (BLAST-2) (C-type lectin domain family 4 member J) (Fc-epsilon-RII) (Immunoglobulin E-binding factor) (Lymphocyte IgE receptor) (CD antigen CD23) [Cleav
<b>Immunogen</b>	Synthesized peptide derived from human CD23
<b>Specificity</b>	This antibody detects endogenous levels of human CD23. Heat-induced epitope retrieval (HIER) Citrate buffer of pH6.0 was highly recommended as antigen repair method in paraffin section
<b>Formulation</b>	Liquid in PBS containing 50% glycerol, 0.5% BSA and 0.02% sodium azide.
<b>Source</b>	Mouse, Monoclonal/IgG1, Kappa
<b>Purification</b>	The antibody was affinity-purified from mouse ascites by affinity-chromatography using specific immunogen.
<b>Dilution</b>	IHC-p 1:100-500. IF 1:50-200
<b>Concentration</b>	1 mg/ml
<b>Purity</b>	≥90%
<b>Storage Stability</b>	-20°C/1 year
<b>Synonyms</b>	
<b>Observed Band</b>	
<b>Cell Pathway</b>	Cell membrane; Single-pass type II membrane protein. Cell membrane; Lipid-anchor. Secreted. Also exists as a soluble excreted form, sCD23.
<b>Tissue Specificity</b>	B-cell,Blood,
<b>Function</b>	function:This receptor has essential roles in the regulation of IgE production and in the differentiation of B-cells (it is a B-cell-specific antigen).,miscellaneous:There are two kinds of Fc receptors for IgE, which differ in both structure and function: high affinity receptors on basophils and mast cells and low affinity receptors on lymphocytes and monocytes.,online information:CD23,PTM:N- and O-glycosylated.,similarity:Contains 1 C-type lectin domain.,subcellular location:Also exists as a soluble excreted form.,
<b>Background</b>	The protein encoded by this gene is a B-cell specific antigen, and a low-affinity receptor for IgE. It has essential roles in B cell growth and differentiation, and the regulation of IgE production. This protein also exists as a soluble secreted form, then functioning as a potent mitogenic growth factor. Alternatively spliced transcript variants encoding different isoforms have been described for this gene.[provided by RefSeq, Jul 2011],



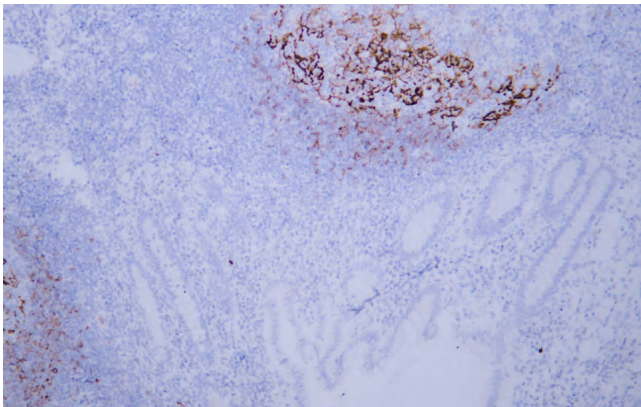
**matters needing attention**

Avoid repeated freezing and thawing!

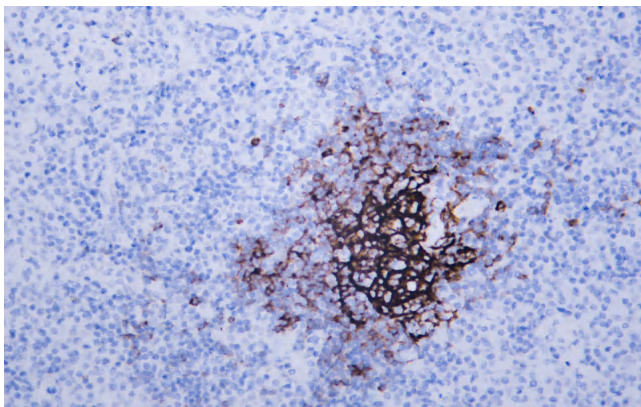
**Usage suggestions**

This product can be used in immunological reaction related experiments. For more information, please consult technical personnel.

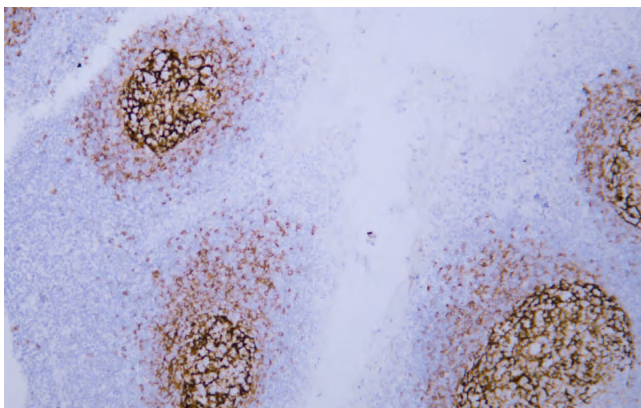
## Products Images



Human appendix tissue was stained with anti-CD23(ABT-CD23) antibody.



Human diffuse large B-cell lymphoma tissue was stained with Anti-CD23 (ABT-CD23) Antibody



Human tonsil tissue was stained with anti-CD23(ABT-CD23) antibody.